

## Balcão expositor

### Display counter



	m/m	ref.º
Dim length (m/m)	1000x500x900	FG 1000
	1500x500x900	FG 1500
	2000x500x900	FG 2000

# Móvel expositor

Display case



Ref.ªV2000



Ref.ª V1000

	m/m	ref.ª
Dim. length (m/m)	1000x500x900	V1000
	1500x500x900	V1500
	2000x500x900	V2000

Opções: Passa fios / Options: Wire hole

# Móvel expositor

## Display case



Ref.º 110

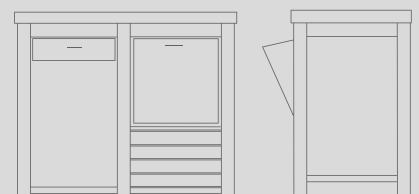


	m/m	ref.°
Dim. length (m/m)	1000x1600x450	110
	1000x2000x450	110

# Bancada aço inox com tumba de borras e gaveta

## Stainless steel workbench with waste bin and drawer

Feito por medida / Made to measure  
Aço inox AISI 304 / Stainless steel AISI 304



## Armário Suspenso

### Washbasin

Feito por medida / Made to measure  
Aço inox AISI 304 / Stainless steel AISI 304



## Bancada aço inox

### Stainless steel workbench

Feito por medida / Made to measure  
Aço inox AISI 304 / Stainless steel AISI 304



**Lava mãos**  
Washbasin



Ref.º LV 400

**Lava mãos mural**  
Mural Washbasin



Ref.º LV 400 M-ECO

**Cuba semi esférica c/350 diâmetro com pedal água quente / fria** / Semi spherical cube with 350 diameter with pedal hot/cold water  
**Dim. (mm)** 400x400x850

# Lava mãos

Washbasin



## características

features

## dimensões (mm)

dimensions (mm)

**Cuba semi esférica c/250 diâmetro c/ pulsador temporizado de água (fria)**  
Semi spherical cube with 250 diameter and water pulsator (cold)

300x300x850

**Cuba 370x350x130 c/ pulsador temporizado de água (fria)**  
Cube 370x350x130 with water pulsator (cold)

400x400x850

**Cuba 370x350x130 c/ pulsador temporizado de água (fria)**  
Cube 370x350x130 with water pulsator (cold)

500x500x850



## Carro em inox para tabuleiros Stainless steel tray car

Feito por medida / Made to measure  
Aço inox AISI 304 / Stainless steel AISI 304



**características**  
features

**dimensões (mm)**  
dimensions (mm)

**Com 12, 16 ou 18 níveis**  
With 12, 16 or 18 levels

**A definir pelo cliente**  
Chosen by the client

## Balde de detritos ECO Waste basket with lip open

**características**  
features

**dimensões (mm)**  
dimensions (mm)

**Com pedal**  
With pedal

Ø 395x610

**Sem pedal**  
Without pedal

Ø 365x610



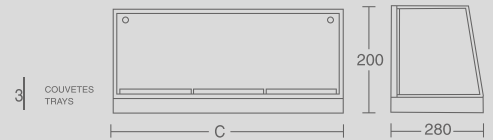
## Expositor de petiscos

### Snacks display case

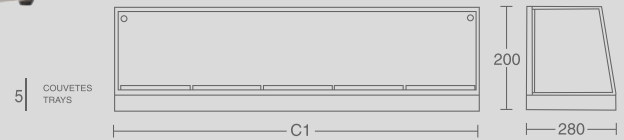
referência reference	comprimento length	largura width	altura height	couvetes no of trays
141	600	280	200	3
142	1000	280	200	5
143	1000	280	315	9



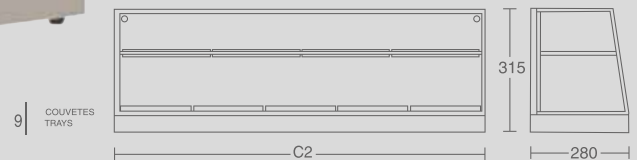
Ref.º 141



Ref.º 142



Ref.º 143



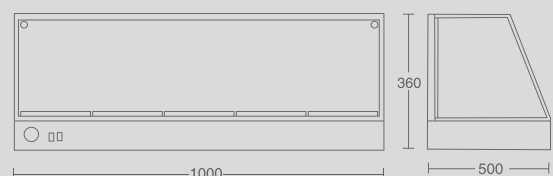
Aço inox AISI 304 / Stainless steel AISI 304

## Expositor de croissanteria aquecida

### Heated croissant display case



Ref.º 143



Aço inox AISI 304 / Stainless steel AISI 304

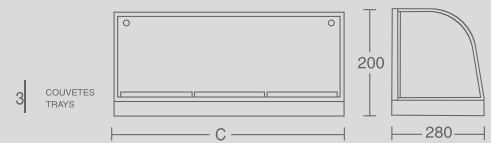
# Expositor de petiscos c/ frente curva

## Snacks top curved glass display case

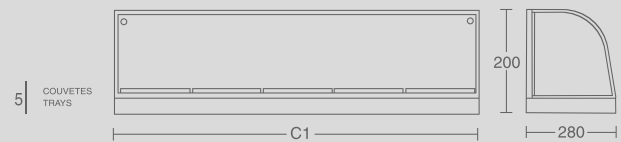
referência reference	comprimento length	largura width	altura height	couvetes no of trays
141C	600	280	200	3
142C	1000	280	200	5
143C	1000	280	315	9



Ref.º 141C



Ref.º 142C



Ref.º 143C

